



# Quality Repair of Manufacturing Equipment

Don't see what you are looking for? Give Us A Call!

ISO 9001:2008 Registered

1-800-542-1331

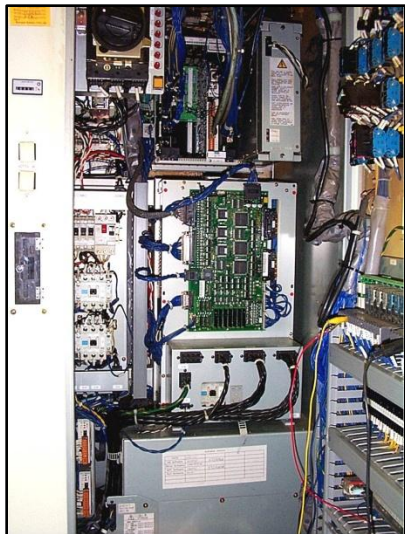
sales@k-and-s.com

www.k-and-s.global



- SOUTHGATE, MI
- TAYLOR, MI
- KOKOMO, IN
- LAWTON, OK
- ROCKY HILL, CT
- OAKVILLE, ON
- MONTREAL, QC
- SALAMANCA, MX
- APODACA, MX
- UNITED KINGDOM
- CZECH REPUBLIC
- BELGIUM

## Kawasaki ZX165 "C" and "D" Series



K+S has full testing and repair capabilities for the Kawasaki ZX165 "C" and "D" Series Robot Control System. The system components are as follows:

HE-20	Encoder	1HZ	Mother Board	AVR	Power Supply
1GC	Servo Amplifier	1GA	Main CPU	1LL	Safety Unit Interface
1GB	Servo Processor	1HA	Main CPU	1JJ	TP Interface
1GM	Current Sensor	1FS	Remote I/O and Control Net	1GS	Serial Interface
1HY	Relay Board	1HP	Parallel I/O	ROP651	Teach Pendant

**ALL UNITS ARE SYSTEM TESTED**

**\*12 MONTH IN-SERVICE WARRANTY**  
Unless otherwise stated at time of quotation

**\*NO CHARGE EVALUATION**  
Priority repair orders may incur in evaluation fee