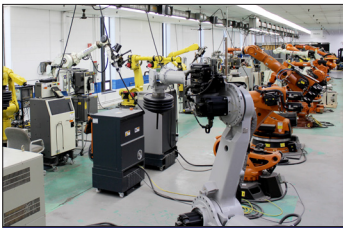


QUALITY REPAIR OF MANUFACTURING EQUIPMENT

a SunSource Company

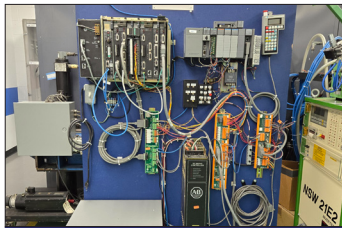
Extensive Repair Capabilities

Electronic Division



Robotics

- Teach Pendants
- Axis Drives & Amps
- Industrial PC's



PLC & CNC Controls

- AC / DC Drives
- NC / CNC Controls
- PLC Controls
- VFD's



Peripheral Electronics

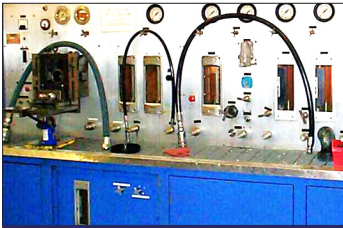
- HMI (Monitors)
- Power Supplies
- Safety Scanners
- Light Curtains



Welders

- Power Supplies
- Wire Feeders
- Torch Reamers
- Chillers

Mechanical Division



Hydraulics

- Hydraulic Pumps
- Cylinders
- Servo and Rotary Actuators



Electronic Motors

- Servo Motors
- AC / DC Motors
- In-house Rewind & Machining



Mechanical

- Vacuum Pumps
- Blowers
- Gearboxes
- Actuators
- Robot Wrist Assemblies
- Fluid Pumps



Valves

- Servo Valves
- Proportional Valves
- Air Valves
- Star Hydraulic Exchange

Specialized Divisions



Machine Tool Spindles

- Belt Driven
- Motorized
- Hydrostatic VMC & HMC
- In-House Machining Capabilities

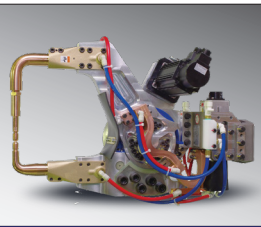
Superior spindle service
a SunSource Company



Torque Tools & Controllers

- Calibration Services
- DC Nutrunners

Encore Systems
a SunSource Company



Weld Guns

- Complete Gun Rebuild
- Repair of Arms and Shanks
- New Part Manufacturing

KRS
Kennedy Repair Services
a SunSource Company



Remanufactured Spares

- Over 200,000 remanufactured spare parts ready for immediate delivery
- System tested and supported by K+S warranty



Alternative Sourcing

- Outsourcing repairable components to Certified Repair Partners when K+S is not able to repair/ test



QUALITY REPAIR OF MANUFACTURING EQUIPMENT

Electronic • Hydraulic • Mechanical

ABB	EATON CORPORATION	Industrial Drives	NORGEN	Square-D
AC Technologies	Eaton/Dynamic	Ingersoll Rand	NSK	Staffa
Acme	Edwards	Inland	OBARA	STANLEY
Adept	EGGER	ITC (Industrial Temp Control)	Oilgear	Star
Advanced Micro Controls Inc.	Electro-Craft	James & Lomason	Okamoto	Sterns
Advanced Technology	Emerson	Kawasaki	OKK	STI (Scientific Technology)
AEG	Engineered Abrasives	KEB	Okuma	STOBER
Allen Bradley	Erhardt & Leimer	KB Electronics	Omron	Stokes
Alpha	Eurotherm	Keba	Opcon	SUMITOMO
AMETEK	Everhard	Kessler	OTC	Sundstrand
Anorad Corp	EXLAR	Keyence	Pacific Scientific	SUPERIOR ELECTRIC
API	Extron Company	Kinney	Panasonic	Switching Systems
Atchley	Falk	Knoll	PARKER	International
Athena Controls Inc.	Fanuc	Kollmorgen	PEERLESS	Symbol Technologies
Atlas Copco	Fenner Corp. (Comtrex)	KOMATSU	Pegasus	Tamagawa
Baldor	Festo	KONE	PHD	Tapeswitch Corp
BANNER	Fincor	KONTRON	Phoenix Contact	Technifor
Barber Coleman	Force Control	Kuka	Pinnacle	Teletel
Baumuller	FRONIUS	LAFERT	Pope	Telemecanique
Becker	Fuji	LAMBDA	Posidyne	TELESIS
BECKHOFF	Fujitsu	Lansmont Corp	POTOMAC ELECTRIC	Texas Instrument
BEI ELECTRONICS INC.	Gai Tronics	LEESON	Power-One Inc.	THERMAL ARC
BELL & GOSSETT	Gardner Denver	Lenze	Precision Ground	Toshiba
BOC EDWARDS	Gast	Leybold	PRICE	Total Control Products
Bosch	General Electric	Lincoln	Pro-Face	Totoku
Boston Gear	Getty's	Louis Allis	Prolog Corp	Toyoda
BRINKMANN	Giddings & Lewis	Magnetek	Proportion Air	TUTHILL
Busch	GLENTEK	Makino	Racine	U.S. ELECTRICAL MOTORS
Camco	GMN	MARATHON	Reliance	Ultra
CLECO	GORMAN-RUPP	Mazak	Rexroth	Varian
CMC	Gould	MCS	RMT ENGINEERING	VEE-ARC
CO-AX VALVES INC.	GRACO	Medar	Roots	VEKTEK
COGNEX CORP.	GRAESSNER	Metrologic Instruments	Ross	VERSALOGIC
Comark	Gros-lte	Midwest	Rueland	VERSARA
Comau	GRUNDFOS	Miller	Saftronics	Vickers
Compumotor	GSE	Milwaukee	Sandpiper	VIKING
Computer Conversions Corp	GUSHER	Minarik	Sanyo Denki	Vogel
CONE DRIVE-TEXTRON	HASS	Mitsubishi	SAUER DANFOSS	Voith
Contraves	Halmer/Robicon	Modicon	SAUTER	WASP
Control Techniques	Hammelman	Moog Inc.	SCA SHUCKER	WEG
Cooper	Hanna	Mori Seiki	Schneider	WEIDMULLER
Creonics Inc.	Hardinge	Motion Control Systems	Schrader Bellows	WEISS
CUTLER-HAMMER	HASKELL	MOTOMAN	Schunk	WELCH
Danfoss	Heald	Motorola	Seco	WESTAMP INC.
Deltron Inc.	Hessap	MTH PUMPS	Sequential	Westinghouse
Degensha America	Hitachi	MTS	SERVO KINETICS	WILDEN
Denison	HONEYWEL	NACHI	Setco	WOODWARD
Denso	Horyu	Nash	SEW Eurodrive	WTC
DME	Hurco	NEC	SICK	Xycom
Dodge	HYDAC	Nematron Corp	Siemens	Yaskawa
Dolan-Jenner	Hydroline	NEW YORK BLOWER	SIGMA	Zaytran
Dresser	IDC (Industrial Devices Corp.)	Nikki Denso	SMC	Zebra Technologies
DYNAMATIC	ILFA	Nippon	Sola Electronics	ZENITH
DYNAPAR	Indramat	Nordson	SORENSEN	